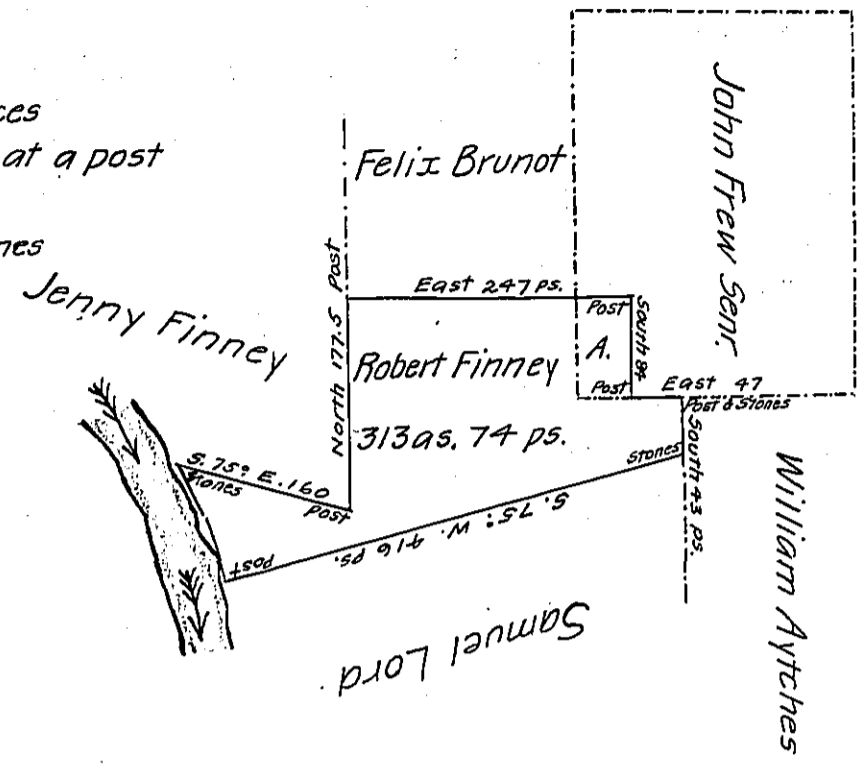


Courses and distances
up French Creek beg^d at a post
N. 19. W. 64
N. 34 1/4 W. 46 to stones



In pursuance of a Warrant for 300 acres dated the 19th. day of
May 1801, was surveyed the 13th. day of November 1801, for Robert Finney the
above described Tract of land containing 313 acres 74 perches and allowance of
six per cent for Roads &. Situate on the East side and adjoining French Creek
in Mead Township and County of Crawford.

William M^c Arthur D. S.

To Samuel Cochran Esquire }
Surveyor General }

N.B. I return the above described Tract of land disputed by John Frew
Senr particularly the parallelogram represented by the letter (obl) it con-
taining about 26 as. of an interference

William M^c Arthur D. S.

IN TESTIMONY that the above is a copy of the original remaining on file in
the Department of Internal Affairs of Pennsylvania, made
conformably to an Act of Assembly approved the 16th day of
February, 1833, I have hereunto set my Hand and caused
the Seal of said Department to be affixed at Harrisburg,
this second day of June 1906

George B. Brown
Secretary of Internal Affairs.